



WASHINGTON REPORT



OVERVIEW

Legislative Agenda

- Permitting
- Debt Limit
- Appropriations/NDAA

Regulatory Agenda

- FERC
- EPA

Implementing BIL and IRA





LEGISLATIVE AGENDA

- Brave New House Majority
- Permitting reform tops the wish list
- Debt limit emerges as must-pass
- Regular business – a low but achievable bar

PERMITTING REFORM

Manchin Proposal

Timelines for review

Curb litigation

Complete Mountain Valley Pipeline

H.R. 1

Revamps cross-border and natural gas authorities

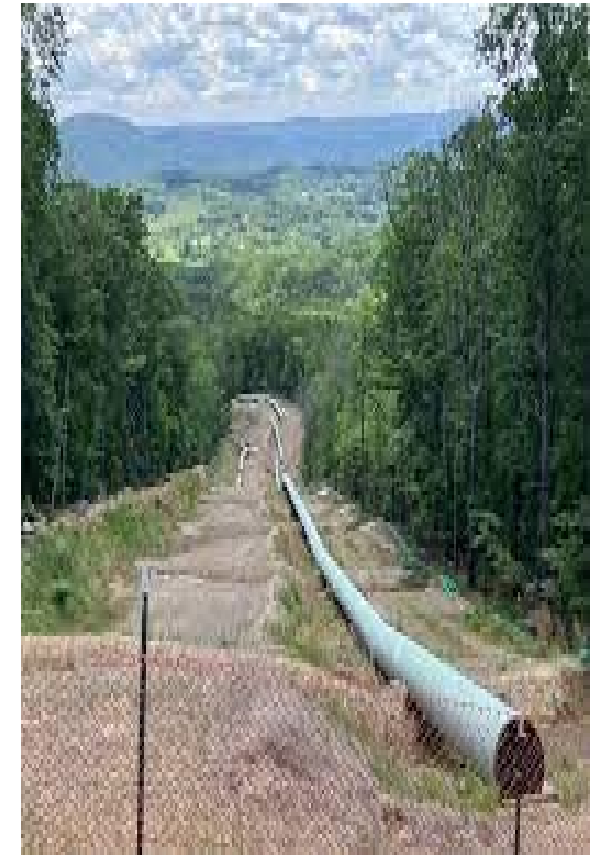
More oil & gas leasing

“BUILDER Act” NEPA reforms



DEBT LIMIT BILL BECOMES LAW

- BUILDER Act
 - Exclude loans and financial assistance from NEPA
 - Determine a lead agency
 - Page limits and timelines
- Study Interregional Transmission Capacity
- Add storage to FAST Act
- Approve Mountain Valley Pipeline



REGULAR BUSINESS – MUST-PASS VEHICLES



Appropriations → → →



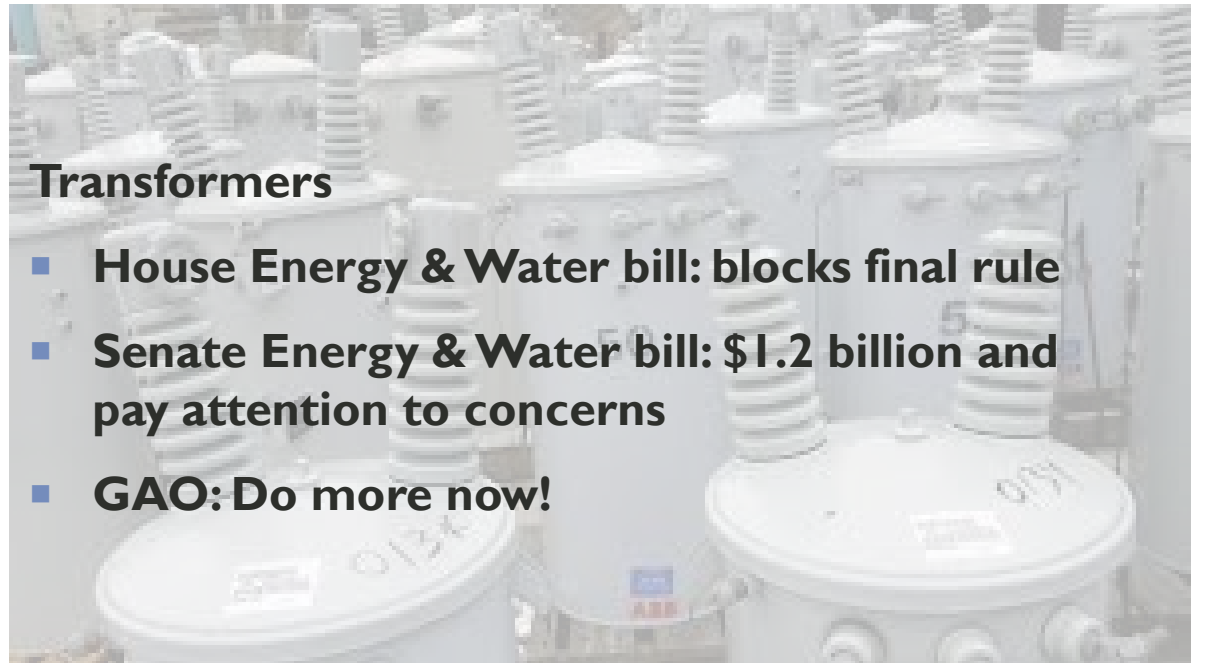
National Defense Authorization Act



Farm Bill



FAA Reauthorization



Transformers

- **House Energy & Water bill: blocks final rule**
- **Senate Energy & Water bill: \$1.2 billion and pay attention to concerns**
- **GAO: Do more now!**

REGULATORY AGENDA - FERC

- Welcome Chairman Phillips: EJ focus
- Cybersecurity: Internal Network Monitoring
- Reliability: New England Winter Gas-Electric Forums, winter reliability standards
- Transmission: Generator Interconnection reform
- Up next: Transmission cost allocation, minimum transfer capacity?



REGULATORY AGENDA – EPA GHG STANDARDS

New:

- Peaking units: lower emitting fuels
- Intermediate load: hydrogen blending
- Baseload: carbon capture and sequestration

Existing:

- Coal: install CCS or co-fire with natural gas to run long-term
- Gas: install CCS or hydrogen co-firing IF turbine over 300 MW and capacity factor above 50%



BIL AND IRA IMPLEMENTATION

Bipartisan Infrastructure Law

- Fewer RFIs, more FOAs
- Very few awards announced
- 2nd round competitions coming soon
- Appropriations TBD

Inflation Reduction Act

- Guidance on wage and apprenticeships, energy communities, “elective pay”
- Awaiting pre-registration portal
- Watch for attempts to rescind funds



QUESTIONS?

Elizabeth K. Whitney

Managing Principal
Elizabeth@meguirewhitney.com

Elizabeth@meguirewhitney.com